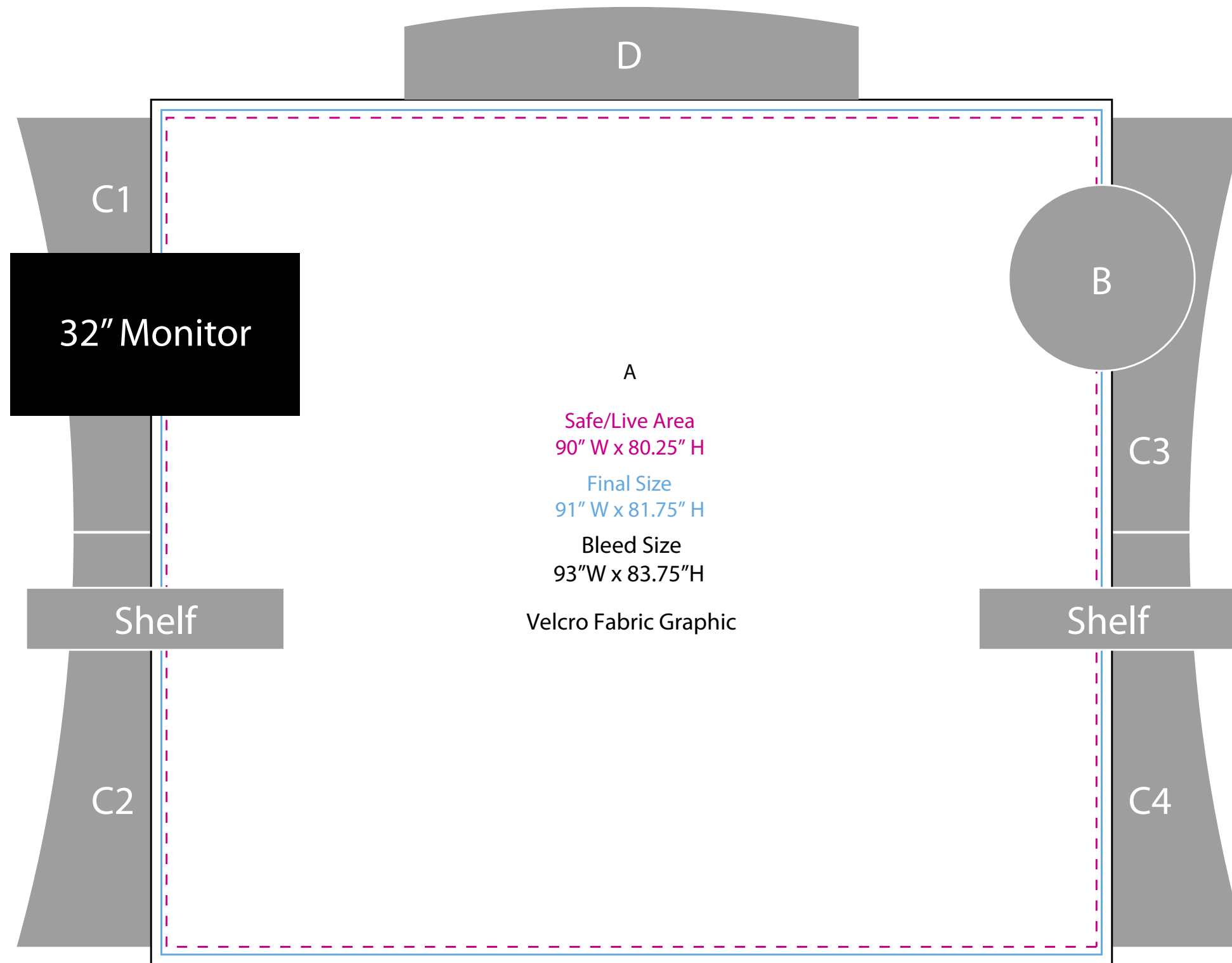
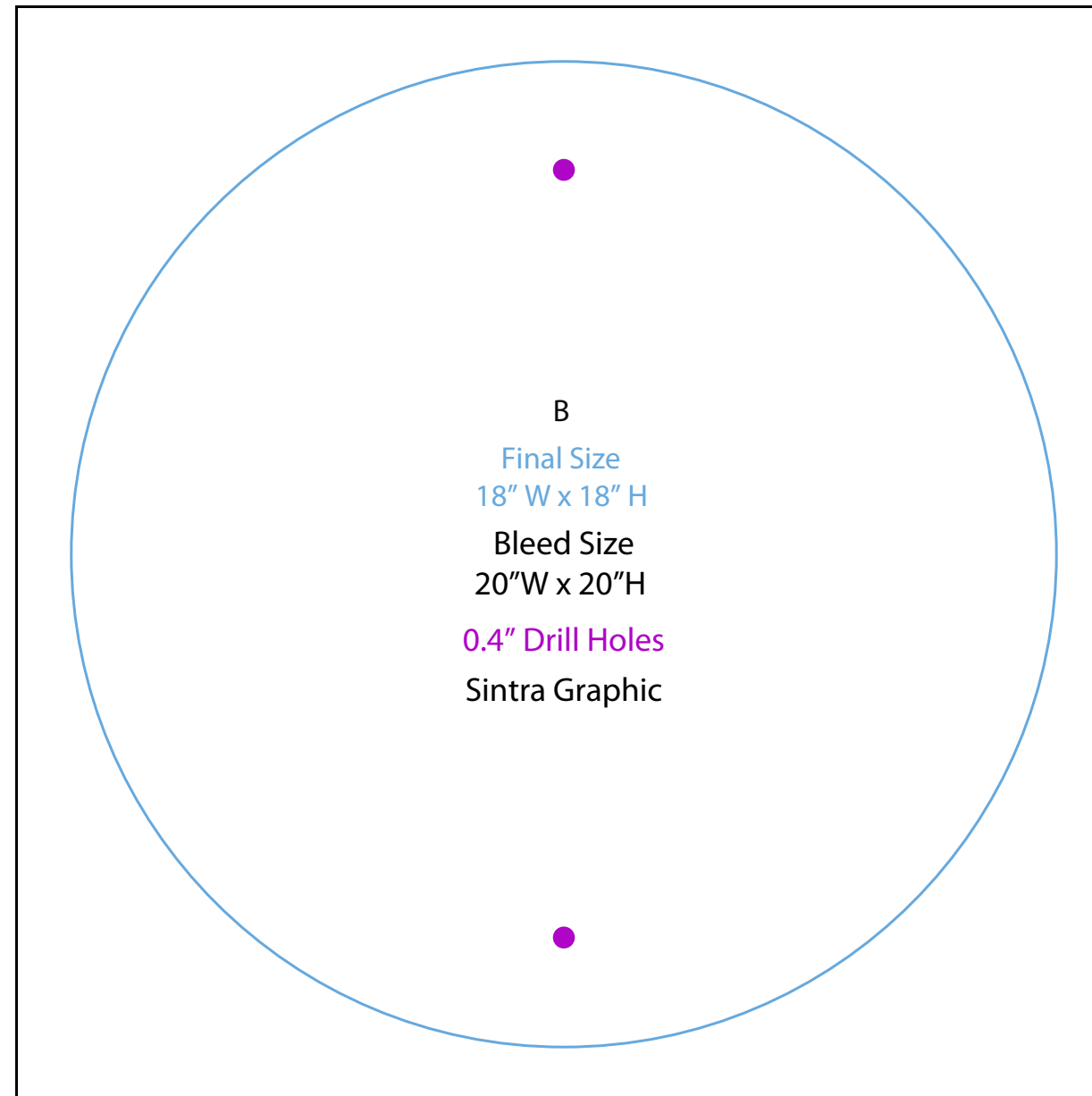


Graphic Template Backwall



NOTE: All Raster Art (jpg, tiff,psd, png, etc.) must be at least 100 dpi at print size.
Standard kits are often customized. Please check with Customer Service to ensure that this template matches your specific job.

Graphic Template Standoff



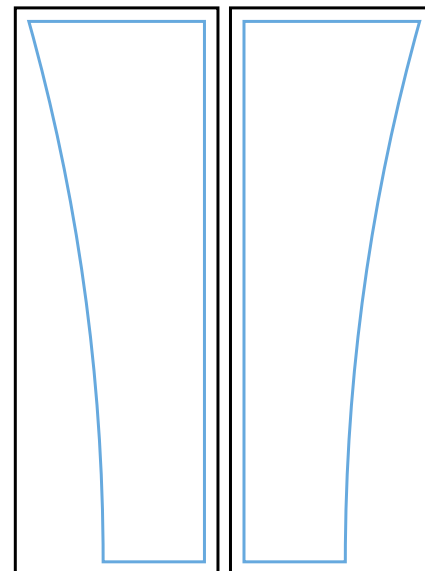
NOTE: All Raster Art (jpg, tiff,psd, png, etc.) must be at least 100 dpi at print size.
Standard kits are often customized. Please check with Customer Service to ensure that this template matches your specific job.

Graphic Template
Wings

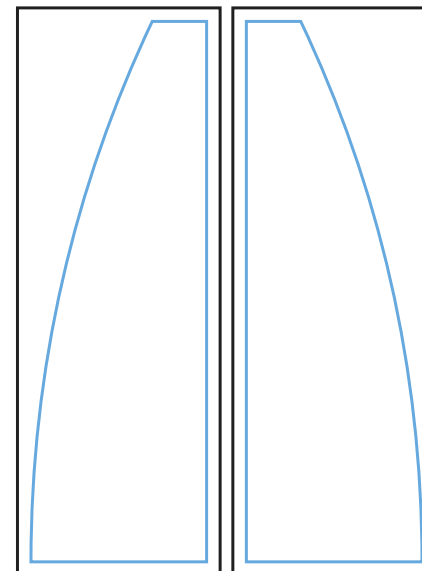
Graphics NOT included in base price. Please request pricing



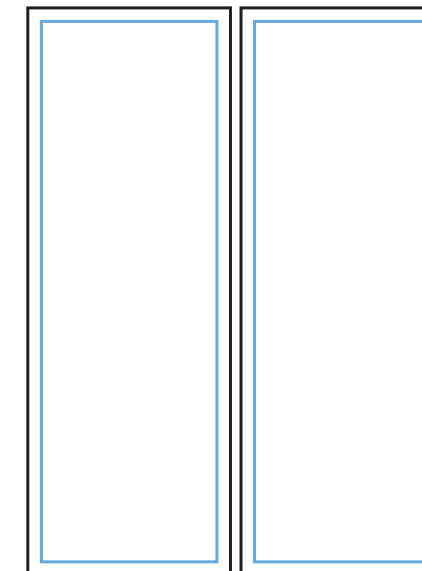
Option 1



Option 2



Option 3

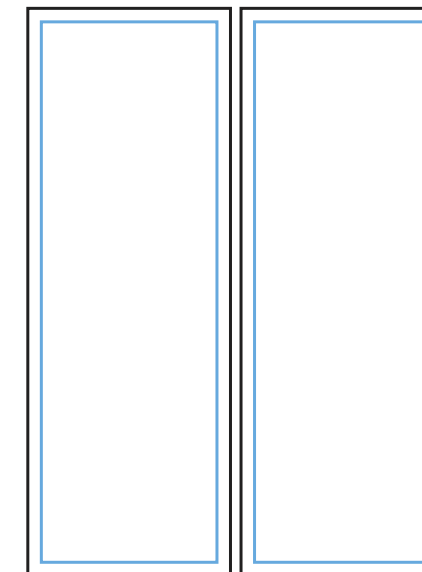
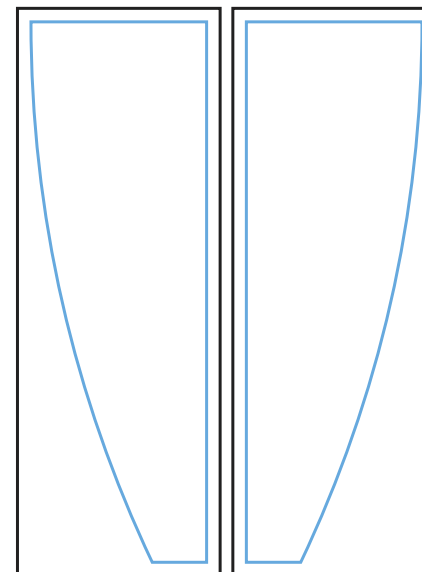
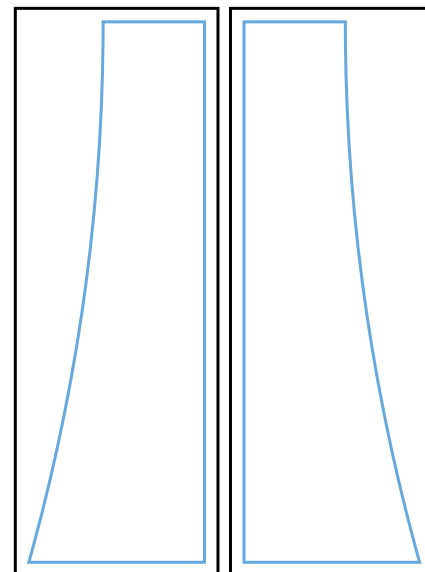


C1, C2,C3,C4

Final Size
13" W x 40" H

Bleed Size
15"W x 42"H

Sintra Graphic

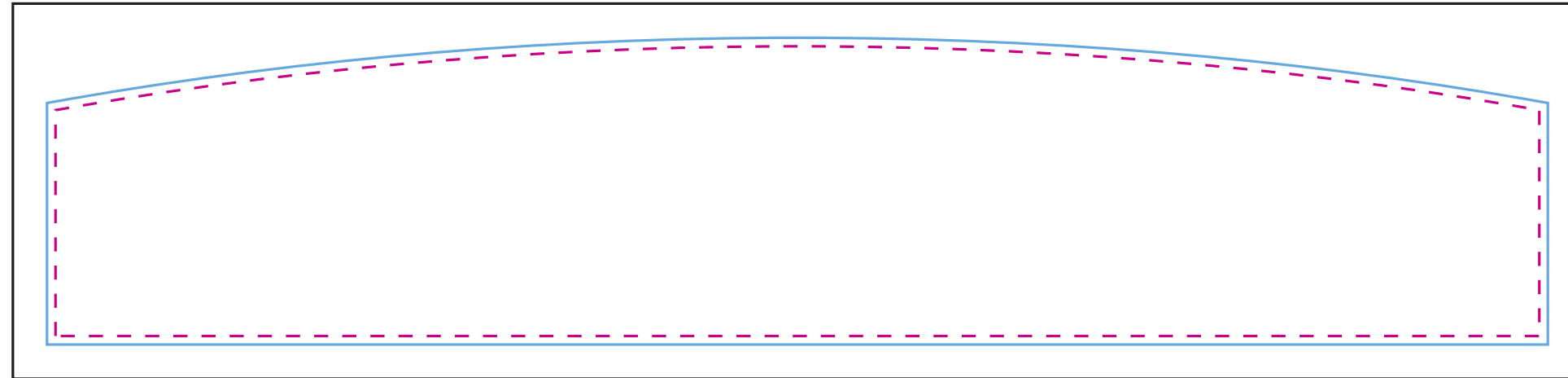


NOTE: All Raster Art (jpg, tiff,psd, png, etc.) must be at least 100 dpi at print size.
Standard kits are often customized. Please check with Customer Service to ensure that this template matches your specific job.

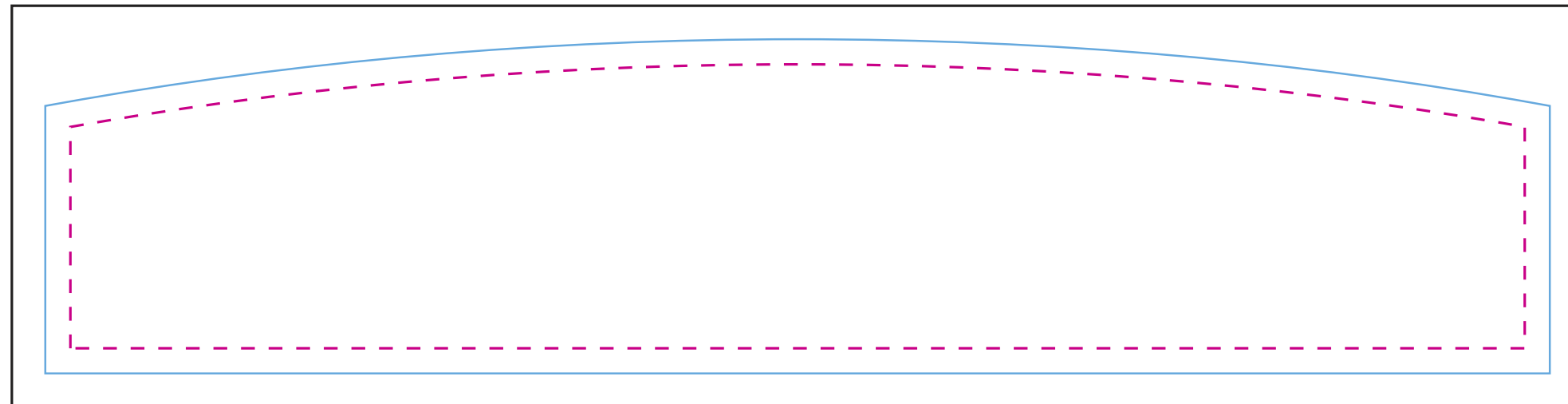
Graphic Template Header



D
Option 1
Live Area
43.48" W x 8.48" H
Final Size
43.98" W x 8.98" H
Bleed Size
45.98"W x 10.98"H
Sintra Graphic



D
Option 2
Live Area
43.48" W x 8.48" H
Final Size
44.98" W x 9.98" H
Bleed Size
46.98"W x 11.98"H
Velcro Fabric Graphic



NOTE: All Raster Art (jpg, tiff,psd, png, etc.) must be at least 100 dpi at print size.
Standard kits are often customized. Please check with Customer Service to ensure that this template matches your specific job.